

V DC PUMPS ISCOMAT DC



EN. DC oil pumps. A new and complete range of pumps for transferring and delivering oil, operated by direct current motors. These products are especially designed for transferring oil from drums in situations and locations where electricity or pneumatic connections are unavailable.

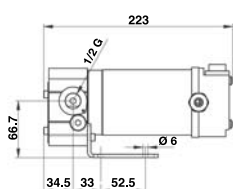
RU. Масляные насосы постоянного тока. Новая и полная серия насосов для перекачивания и подачи масла с приводом от двигателей постоянного тока. Эти изделия предусмотрены для перекачивания масла из бочки в местах, в которых отсутствует соединение с электросетью или источником сжатого воздуха.

DE. Gleichstrom-Ölpumpen. Eine neue, vollständige Pumpenpalette mit Antrieb durch Gs-Motoren zum Umfüllen und Zapfen von Öl. Diese Produkte sind für Anwendungen gedacht, bei denen Öl vom Fass umgefüllt werden muss, aber kein Strom- oder Pressluftanschluss vorhanden ist.

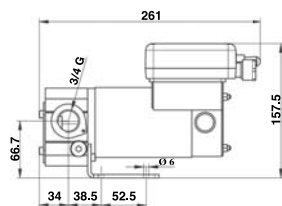
PERFORMANCE

- | | | |
|---|---|--|
| <ul style="list-style-type: none"> - Flow rate 4 - 10 l/min. - Operating pressure: 5 bar - Viscosity up to 2000 cSt (Viscomat DC 60/2 max viscosity of oil 600 cSt) - Duty cycle: 30 min - Noise level below 65 dB | <ul style="list-style-type: none"> - Расход от 4 до 10 л/мин - Рабочее давление: 5 бар - Вязкость до 2000 сСт (Viscomat DC 60/2 макс. вязкость масла 600 сСт) - Рабочий цикл: 30 мин - Уровень шума ниже 65 дБ | <ul style="list-style-type: none"> - Durchflussmenge 4 - 10 l/Min. - Betriebsdruck: 5 bar - Viskosität bis 2000 cSt (Viscomat DC 60/2 max. Ölviskosität 600 cSt) - Arbeitszyklus: 30 Min. - Lärmpegel unter 65 dB |
|---|---|--|

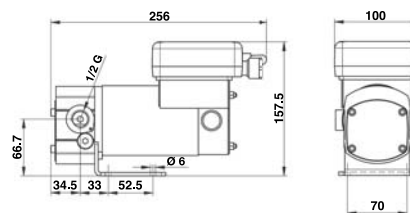
DIMENSIONS



VISCOMAT DC 60/1



VISCOMAT DC 60/2



VISCOMAT DC 120/1

PRODUCTS' RANGE WEIGHT AND PACKAGING

Code	Weight		Packaging		
	kg	lbs	mm	inch	pcs/box
F0030902A	3	6,6	200x120x140	7,9x4,7x5,5	1
F0030901A	4,9	10,8	345x175x255	13,6x6,9x10	1
F0030900A	4,9	10,8	345x175x255	13,6x6,9x10	1
F0031002A	3	6,6	200x120x140	7,9x4,7x5,5	1
F0031001A	4,9	10,8	345x175x255	13,6x6,9x10	1
F0031000A	4,9	10,8	345x175x255	13,6x6,9x10	1
F00311000	4,9	10,8	345x175x255	13,6x6,9x10	1
F00311010	4,9	10,8	345x175x255	13,6x6,9x10	1



Flow-rate
up to
10 l/min
(up to 2,8 gpm)

Viscosity
up to
2000
cSt



PIUSI

DISPENSERS

PUMPS

METERS

NOZZLE METERS

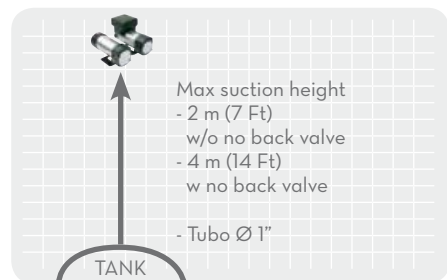
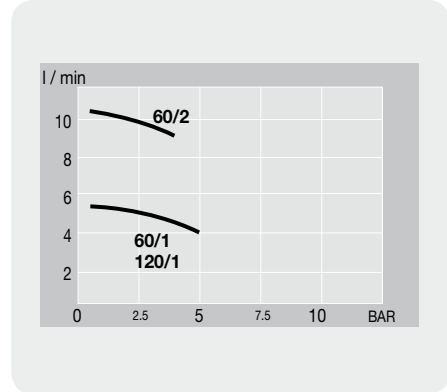
NOZZLE

SPECIAL EQUIPMENTS

FLUID MONITORING

ACCESSORIES

FILTERING



FEATURES



ON DEMAND



Code	Description	60/1 12V	60/2 12V	60/1 24V	60/2 24V	Fuse on the cable
R14437000	Kit cable 2 m (12V/24V)	YES		YES		
R10011000	Kit cable 2 m (12V)		YES			YES
R10040000	Kit cable 2 m (24V)				YES	YES
R14438000	Kit cable 4 m (12V/24V)	YES		YES		
R10041000	Kit cable 4 m (12V)		YES			YES
R10039000	Kit cable 4 m (24V)				YES	YES

PRODUCTS' RANGE TECHNICAL DATA

Code	Description	Fluids type	Flow-rate		Pressure		Voltage			rpm	Inlet Outlet	Press. switch
			l/min	gpm	bar	psi	DC Volt	Power Watt	Amp. max.			
F0030902A	Viscomat DC 60/1 12 V	☉	4	1,2	5	70	12	150	18,5	2900	1/2" BSP	NO
F0030901A	Viscomat DC 60/2 12 V (*)	☉	10	2,8	4	57	12	300	35	2900	3/4" BSP	NO
F0030900A	Viscomat DC 120/1 12 V	☉	5	1,4	10	140	12	200	26,5	2900	1/2" BSP	NO
F0031002A	Viscomat DC 60/1 24 V	☉	4	1,2	5	70	24	150	9,5	2900	1/2" BSP	NO
F0031001A	Viscomat DC 60/2 24 V (*)	☉	10	2,8	4	57	24	300	18	2900	3/4" BSP	NO
F0031000A	Viscomat DC 120/1 24 V	☉	5	1,4	10	140	24	200	19,5	2900	1/2" BSP	NO
F00311000	Viscomat DC 120/1 12 V PST	☉	5	1,4	10	140	12	200	22,5	2900	1/2" BSP	YES
F00311010	Viscomat DC 120/1 24 V PST	☉	5	1,4	10	140	24	200	19,5	2900	1/2" BSP	YES

(*) For Viscomat DC 60/2 max oil viscosity 600 cSt